

Extra Battery

3 Phase Extra Battery



HIGH
EFFICIENCY



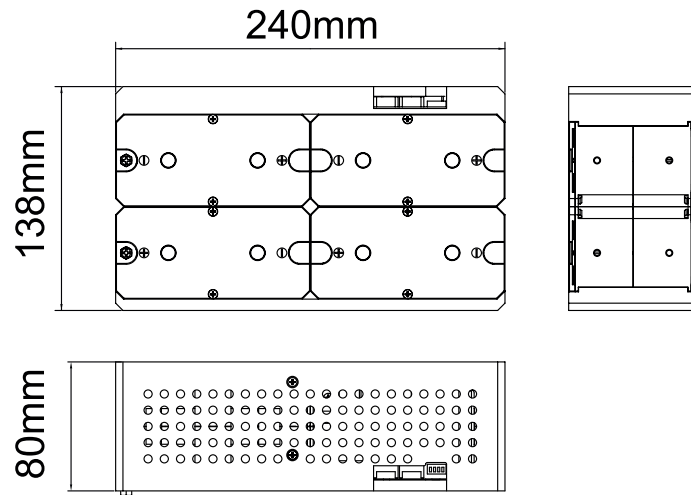
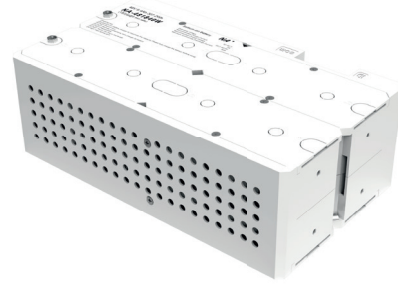
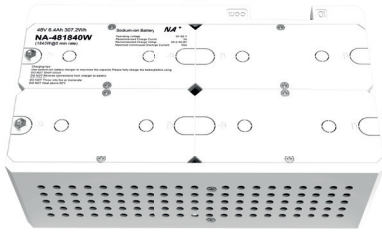
CLEAN
ENERGY



ECO-FRIENDLY
TECHNOLOGY



ALL DEVICES
COMPATIBLE



Model	NA-481840W (@5min-rate)
MECHANICAL SPECIFICATIONS	
Case Material	ABS V0
Cell Type-Chemisty	Sodium-ion
Terminal Type	M4
IP Grade	IP20
BASIC PERFORMANCE	
Operating Voltage	32~62V
IR	$\leq 145\text{m}\Omega$
Self Discharge	$\leq 3\%/ \text{Month}$
Cells	1.5~4.0V
Cycle Life	3000 times(100%DOD)
PHYSICAL PARAMETER	
Intelligent Battery Monitoring Unit	Built In
Communication Port	CAN
Power Supply	5V and 12V
Size (mm)	240x138x80
Weight (kg)	3.4
TEMPERATURE PERFORMANCE	
Charge Temperature	-20~40 °C
Recommend Charge Temperature	0~25 °C
Discharge Temperature	-20~40 °C
Storage Temperature	-20~50 °C

The battery module must not be charged or discharged independently.
Specifications subject to change without prior notice.