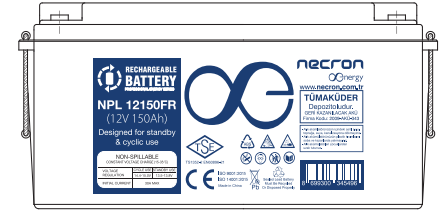
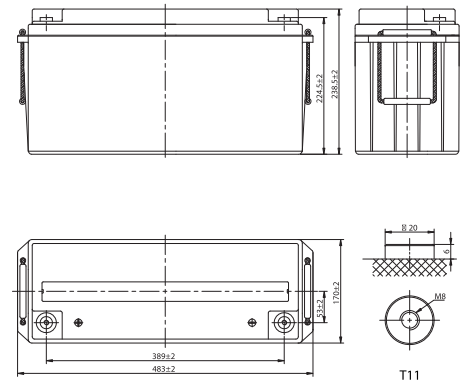


### Specifications

Rated Voltage	12V	
Nominal Capacity(C <sub>10</sub> , 1.80V/cell)	150Ah	
Dimension	Length	483mm (19.0inches)
	Width	170mm (6.69inches)
	Container Height	238.5mm (9.39inches)
	Total Height	238.5mm (9.39inches)
Approx. Weight	43.2kg (95.2lbs)	
Terminal	T11(M8)	
Container Material	ABS (UL94 HB or V-0 optional)	
Rated Capacity (25°C)	100.0 Ah	(10hr, 10.0A, 1.80V/cell)
	96.0 Ah	(8hr, 12.0A, 1.80V/cell)
	89.0 Ah	(5hr, 17.8A, 1.75V/cell)
	77.1 Ah	(3hr, 25.7A, 1.75V/cell)
	64.2 Ah	(1hr, 64.2A, 1.67V/cell)
Max. Discharge Current	3000A	
Internal Resistance (25°C)	Approx 3.5 mΩ (Fully charged)	
Operating Temp. Range	Discharge	-15~50°C (5~122°F)
	Charge	-20~40°C (-4~104°F)
	Storage	-15~40°C (5~104°F)
Nominal Operating Temp. Range	25±3°C (77±5°F)	
Max. Charging Current(25°C)	0.3C	
Charge voltage(25°C)	Float	13.5V
	Temp. Coefficient	-5mV/cell/°C
	Equalization	14.1~14.4V
Effect of temp. to Capacity	40°C (104°F)	103%
	25°C (77°F)	100%
	0°C (32°F)	86%
Self Discharge	≤3%/month @ 25°C	



### Layout



### Constant Current Discharge (Amperes) at 25 °C (77°F)

F.V/Time	5min	10min	15min	20min	30min	45min	1h	1.5h	2h	3h	4h	5h	6h	8h	10h	20h
1.85V/cell	305.9	217.5	192.4	151.3	135.3	98.9	83.8	60.7	51.1	37.5	29.4	25.5	22.5	17.3	14.3	7.60
1.80V/cell	347.8	246.9	218.0	171.1	147.3	104.8	86.8	62.8	52.7	40.7	31.4	26.8	24.2	18.2	15.0	7.88
1.75V/cell	377.8	267.7	236.0	184.7	150.3	108.6	91.1	66.0	55.5	41.4	32.0	27.3	24.3	18.3	15.2	7.95
1.70V/cell	403.9	285.4	250.7	195.8	153.3	110.8	92.9	67.3	56.6	42.2	32.5	27.8	24.5	18.6	15.3	8.03
1.67V/cell	418.0	294.5	258.0	201.2	155.6	112.4	94.3	68.3	57.4	42.6	33.0	28.3	24.6	18.8	15.5	8.13
1.60V/cell	432.8	304.5	266.0	206.3	157.8	114.0	95.6	69.3	58.3	43.0	33.4	28.7	24.8	19.1	15.7	8.23

### Constant Power Discharge (Watts/cell) at 25 °C (77°F)

F.V/Time	5min	10min	15min	20min	30min	45min	1h	1.5h	2h	3h	4h	5h	6h	8h	10h	20h
1.85V/cell	559.6	400.8	364.3	287.8	258.5	190.2	162.1	117.8	99.3	73.2	57.6	50.2	44.4	34.3	28.5	15.1
1.80V/cell	625.9	448.3	407.5	321.9	279.2	200.2	167.0	121.2	102.1	79.1	61.3	52.6	47.5	36.0	29.8	15.7
1.75V/cell	668.0	478.5	434.9	343.6	282.8	206.2	174.4	126.8	107.0	80.4	62.2	53.4	47.8	36.1	30.1	15.8
1.70V/cell	702.3	503.0	457.2	361.2	286.0	208.9	177.0	128.8	108.7	81.6	63.1	54.1	47.9	36.6	30.3	15.9
1.67V/cell	713.7	511.2	464.7	367.1	288.0	210.8	178.6	130.0	109.8	82.1	63.8	55.0	48.0	37.0	30.7	16.1
1.60V/cell	723.7	518.4	471.2	372.2	289.3	211.8	179.9	131.0	110.7	82.4	64.3	55.5	48.2	37.4	31.0	16.3

## Applications

- All purpose
- Uninterruptable Power Supply (UPS)
- Electric Power System (EPS)
- Emergency backup power supply
- Alarm and security system
- Communication power supply
- DC power supply
- Auto control system

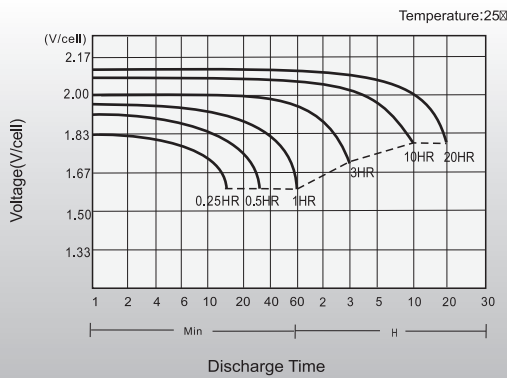
## General Features

- 10 years design life (25°C)
- Lead calcium alloy, sealed design, no watering required
- Puncture resistant micro-porous glass mat separators extend life
- Unique technology optimizes power capacity, cell consistency, and long-term reliability
- Designed for a wide range of applications

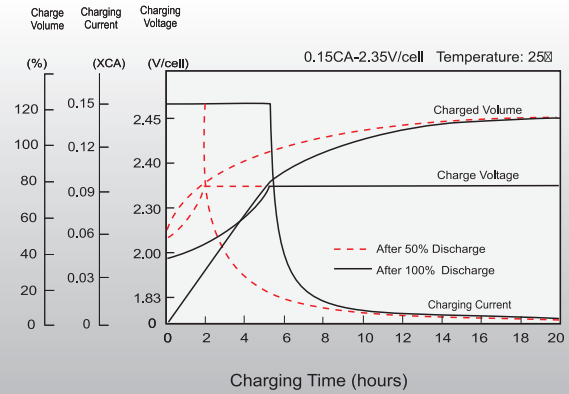
## Standards

- Compliance with IEC 60896 standards, EU Battery Directive
- UL, CE Approved
- ISO 45001, ISO 9001 and ISO 14001 certified production facilities

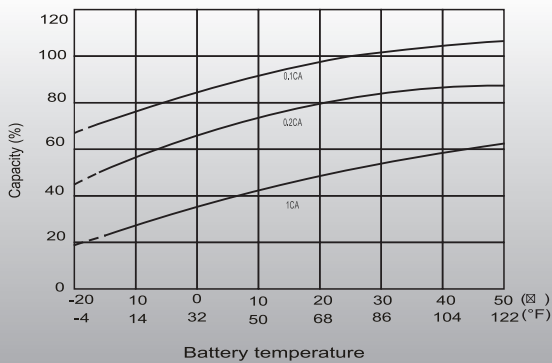
### Discharge Characteristics



### Float Charging Characteristics



### Temperature Effects in Relation to Battery Capacity



### Float Service Life

