

NPL1275R

Black Line 12V 75Ah



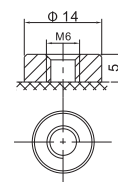
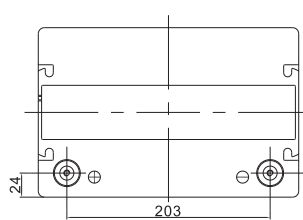
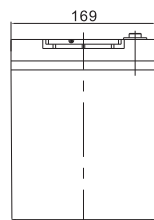
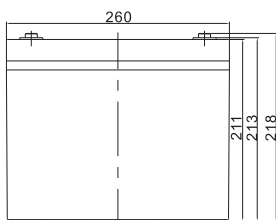
Specifications

Cells Per Unit	6
Voltage Per Unit	12V
Capacity	75Ah / 300W @15min-rate to 1.67 per cell @25°C
Weight	Approx. 25.5kg (Tolerance ± 5%)
Internal Resistance	≤ 5.8 mΩ (Full Charge Condition @25°C)
Terminal	Default F11 (M6)
Max. Discharge Current	800A (5 sec)
Short Circuit Current	1900A
Design Life	15 Years
Max. Charging Current	24.0A
Reference Capacity	C ₁₀ 75.0Ah C ₂₀ 80.0Ah
Float Charging Voltage	13.50V ~ 13.62V @ 25°C Temperature Compensation: -3mV/°C/ Cell
Cycle Charging Voltage	14.10 ~ 14.40V @25°C Temperature Compensation: -4mV/°C/ Cell
Operating Temperature Range	Discharge: -20°C ~ 60°C Charge: 0°C ~ 50°C Storage: -20°C ~ 60°C
Normal Operating Temperature Range	25°C ± 5°C
Self Discharge	NECRON Valve Regulated Lead Acid (VRLA) batteries can be stored for up 6 months at 25°C and then recharging is recommended. Months Self-discharge ratio is less than 3% at 25°C. Please charge batteries before using.
Container Material	A.B.S UL94-HB, UL94-V0 Optional



NPL1275R series Valve Regulated Lead Acid (VRLA) battery is designed for heavy load discharge applications with 15 years design life in float service. By using strong grids, thick plate and specially designed active material, it is with lower I.R, lower self discharge rate, high power, and longer service life. The NPL1275R series battery offers 30% more power output than the standard series. It is suitable for high power standby used, such as datacenter, UPS, etc.

Dimensions



F11 TERMINAL

Length	260±2mm (10.2 inches)
Width	169±2mm (6.65 inches)
Height	211±2mm (8.31 inches)
Total Height	216±2mm (8.50 inches)
Terminal	Value
M5	6-7 N*m
M6	8-10 N*m
M8	10-12 N*m

Unit: mm

Constant Current Discharge (Amperes) at 25 °C (77°F)

F.V/Time	5MIN	8MIN	10MIN	15MIN	20MIN	30MIN	60MIN	90MIN
1.60V	269.8	228.3	208.7	165.9	135.1	99.55	57.61	41.34
1.67V	244.8	209.3	192.9	154.7	127.0	94.20	54.96	39.66
1.70V	234.4	201.2	185.9	150.0	123.4	91.93	53.86	38.89
1.75V	216.4	187.4	174.3	141.9	117.2	88.04	51.99	37.67
1.80V	198.3	173.6	162.7	134.2	111.7	84.31	50.12	36.44
1.85V	170.2	147.9	137.8	115.4	96.96	74.58	45.28	33.23

Constant Power Discharge (Watts/cell) at 25 °C (77°F)

F.V/Time	5MIN	8MIN	10MIN	15MIN	20MIN	30MIN	60MIN	90MIN
1.60V	495.7	425.1	392.6	316.2	259.6	193.4	108.2	78.25
1.67V	461.3	398.8	370.4	300.0	247.7	185.5	104.1	75.64
1.70V	446.2	386.9	360.1	293.0	242.4	181.8	102.4	74.57
1.75V	418.7	365.6	342.0	280.3	232.7	175.8	99.61	72.58
1.80V	389.7	343.2	323.0	267.8	223.9	169.6	96.64	70.59
1.85V	339.5	296.4	277.3	232.8	196.2	151.3	87.90	64.93

(Note) The above characteristics data are average values obtained within three charge/discharge cycle not the minimum values.



