

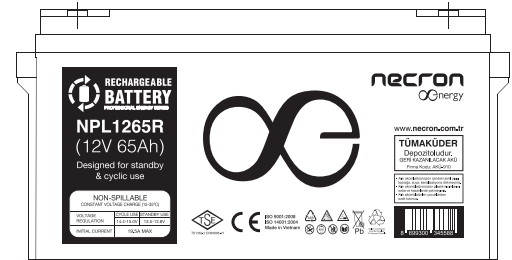
NPL1265R

Black Line 12V 65Ah

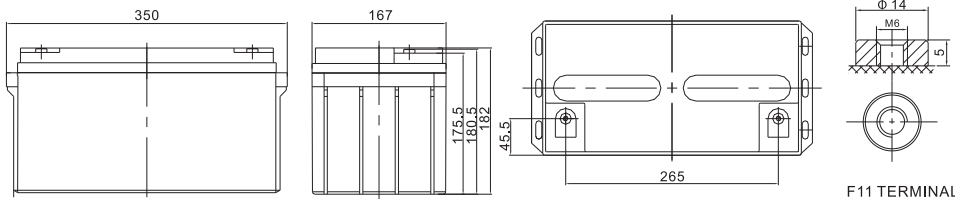


Specifications

Cells Per Unit	6
Voltage Per Unit	12V
Capacity	240W@15min-rate to 1.67 per cell @25°C
Weight	Approx. 19.5kg (Tolerance ± 5%)
Internal Resistance	≤ 6.5 mΩ (Full Charge Condition @25°C)
Terminal	Default F11 (M6)
Max. Discharge Current	650A (5 sec)
Short Circuit Current	1650A
Design Life	15 Years
Max. Charging Current	19.5A
Reference Capacity	C10 61.3Ah C20 65.0Ah
Standby Use Voltage	13.5V ~ 13.8V @25°C Temperature Compensation: -3mV/°C/ Cell
Equalization Voltage	14.6V ~ 14.8V @25°C Temperature Compensation: -4mV/°C/ Cell
Operating Temperature Range	Discharge: -20°C ~ 60°C Charge: 0°C ~ 50°C Storage: -20°C ~ 60°C
Normal Operating Temperature Range	25°C ± 5°C
Self Discharge	NECRON Valve Regulated Lead Acid (VRLA) batteries can be stored for up to 6 months at 25°C and then recharging is recommended. Months Self-discharge ratio is less than 3% at 25°C. Please charge batteries before using.
Container Material	A.B.S. UL94-HB, UL94-V0 Optional



Dimensions



Length	350±2mm (13.8 inches)
Width	167±2mm (6.57 inches)
Height	182±2mm (7.17 inches)
Total Height	182±2mm (7.17 inches)
Terminal	Value
M5	6~7 N*m
M6	8~10 N*m
M8	10~12 N*m

Unit: mm

Constant Current Discharge (Amperes) at 25 °C (77°F)

F.V/Time	5MIN	8MIN	10MIN	15MIN	20MIN	30MIN	60MIN	90MIN
1.60V	239.8	198.6	174.0	132.7	108.1	79.66	46.10	33.09
1.67V	217.6	182.1	160.8	123.8	101.6	75.38	43.98	31.74
1.70V	208.4	175.0	155.0	120.0	98.74	73.57	43.10	31.12
1.75V	192.4	163.0	145.3	113.5	93.81	70.45	41.60	30.14
1.80V	176.3	151.0	135.6	107.4	89.39	67.47	40.11	29.16
1.85V	151.3	128.6	114.9	92.38	77.59	59.68	36.23	26.59

Constant Power Discharge (Watts/cell) at 25 °C (77°F)

F.V/Time	5MIN	8MIN	10MIN	15MIN	20MIN	30MIN	60MIN	90MIN
1.60V	440.7	369.8	327.2	253.0	207.7	154.8	86.58	62.62
1.67V	410.2	346.9	308.8	240.0	198.3	148.4	83.33	60.53
1.70V	396.7	336.5	300.2	234.4	194.0	145.4	81.96	59.68
1.75V	372.3	318.0	285.1	224.3	186.2	140.6	79.71	58.08
1.80V	346.5	298.5	269.2	214.3	179.2	135.7	77.34	56.49
1.85V	301.8	257.8	231.2	186.3	157.0	121.1	70.34	51.96



