

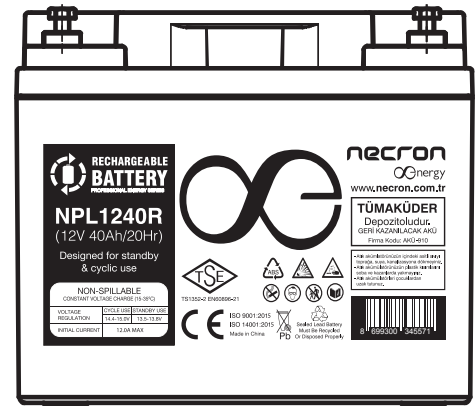
NPL1240R

Black Line 12V 40Ah

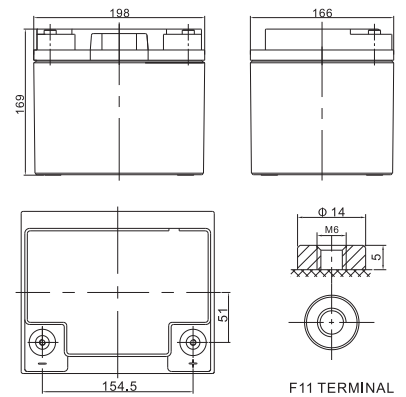


Specifications

Cells Per Unit	6	
Voltage Per Unit	12V	
Capacity	40Ah 10 Hour Rate to 1.80V Per Cell @25°C	
Weight	Approx. 11.5Kg (Tolerance ± 5%)	
Internal Resistance	≤ 10.0 mΩ (Full Charge Condition @25°C)	
Terminal	Default F11(M6), F4 (M5) Optional	
Max. Discharge Current	400A (5 Sec)	
Short Circuit Current	920A	
Design Life	12 Years	
Max. Charging Current	12.0A	
Reference Capacity	C ₃ 30.0Ah C ₁₀ 40.0Ah	C ₅ 34.0Ah C ₂₀ 42.4Ah
Float Charging Voltage	13.5V ~ 13.8V @25°C Temperature Compensation: -3mV/°C/ Cell	
Cycle Charging Voltage	14.6V ~ 14.8V @25°C Temperature Compensation: -4mV/°C/ Cell	
Operating Temperature Range	Discharge: -20°C ~ 60°C Charge: 0°C ~ 50°C Storage: -20°C ~ 60°C	
Normal Operating Temperature Range	25°C ± 5°C	
Self Discharge	NECRON Valve Regulated Lead Acid (VRLA) batteries can be stored for up 6 months at 25°C and then recharging is recommended. Months Self-discharge ratio is less than 3% at 25°C. Please charge batteries before using.	
Container Material	A.B.S UL94-HB, UL94-V0 Optional	



Layout



Constant Current Discharge (Amperes) at 25 °C (77 °F)

F.V/Time	5MIN	10MIN	15MIN	30MIN	1HR	2HR	3HR	4HR	5HR	8HR	10HR	20HR
1.60V	124.3	95.7	73.4	43.4	24.4	14.6	11.3	8.87	7.55	5.07	4.22	2.21
1.65V	119.8	90.4	70.2	41.6	23.6	14.1	10.9	8.63	7.35	5.01	4.17	2.17
1.70V	114.0	83.2	65.7	39.8	22.8	13.6	10.6	8.39	7.16	4.94	4.11	2.15
1.75V	106.5	76.2	61.2	38.0	22.0	13.2	10.3	8.18	6.98	4.87	4.05	2.12
1.80V	97.0	69.0	56.5	36.4	21.2	12.7	10.0	7.94	6.80	4.79	4.00	2.10
1.85V	85.4	56.4	46.9	31.3	19.0	11.6	9.24	7.38	6.34	4.49	3.77	1.99

Constant Power Discharge (Watts/cell) at 25 °C (77 °F)

F.V/Time	5MIN	10MIN	15MIN	30MIN	1HR	2HR	3HR	4HR	5HR	8HR	10HR	20HR
1.60V	213.9	162.6	128.4	78.8	45.9	27.6	21.5	17.0	14.5	9.90	8.30	4.35
1.65V	211.7	156.6	124.5	76.4	44.6	26.8	21.0	16.6	14.2	9.81	8.21	4.28
1.70V	203.6	146.9	118.4	73.8	43.4	26.1	20.5	16.2	13.9	9.68	8.09	4.24
1.75V	193.6	136.8	111.8	71.2	42.1	25.3	20.0	15.9	13.6	9.57	8.00	4.19
1.80V	179.5	126.0	104.7	68.8	40.7	24.5	19.4	15.5	13.3	9.43	7.90	4.15
1.85V	160.8	104.8	88.1	59.8	36.7	22.6	18.0	14.4	12.4	8.87	7.45	3.95



