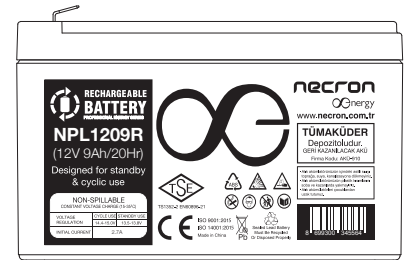
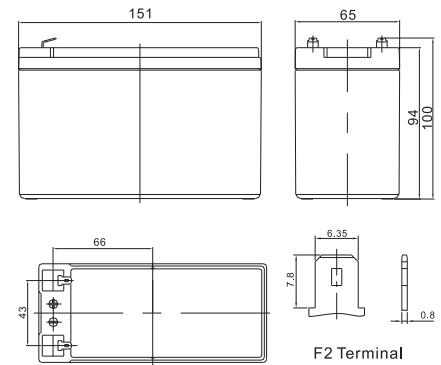


Specifications

Cells Per Unit	6
Voltage Per Unit	12V
Capacity	9Ah 20 Hour Rate to 1.67V Per Cell @25°C
Weight	Approx. 2.40Kg (Tolerance ± 5%)
Internal Resistance	≤ 22.0 mΩ (Full Charge Condition @25°C)
Terminal	Default F2
Max. Discharge Current	90A (5 Sec)
Short Circuit Current	450A
Design Life	8 Years
Max. Charging Current	2.7A
Reference Capacity	C ₁₀ 8.5Ah C ₂₀ 9.0Ah
Float Charging Voltage	13.5V ~ 13.8V @25°C Temperature Compensation: -3mV/°C/ Cell
Cycle Charging Voltage	14.1V ~ 14.4V @25°C Temperature Compensation: -4mV/°C/ Cell
Operating Temperature Range	Discharge: -20°C ~ 60°C Charge: 0°C ~ 50°C Storage: -20°C ~ 60°C
Normal Operating Temperature Range	25°C ± 5°C
Self Discharge	NECRON Valve Regulated Lead Acid (VRLA) batteries can be stored for up to 6 months at 25°C and then recharging is recommended. Months Self-discharge ratio is less than 3% at 25°C. Please charge batteries before using.
Container Material	A.B.S UL94-HB, UL94-V0 Optional



Layout



Constant Current Discharge (Amperes) at 25 °C (77°F)

F.V/Time	3MIN	5MIN	8MIN	10MIN	15MIN	20MIN	30MIN	60MIN	90MIN
1.60V	46.94	41.26	32.97	28.26	20.85	16.39	11.68	6.548	4.642
1.67V	42.60	37.44	30.15	26.05	19.50	15.47	11.06	6.241	4.443
1.70V	40.76	35.83	28.95	25.11	18.90	15.06	10.79	6.105	4.360
1.75V	37.75	33.19	26.97	23.53	17.85	14.30	10.34	5.900	4.228
1.80V	34.58	30.40	24.93	21.95	16.95	13.63	9.889	5.679	4.078
1.85V	29.57	25.99	21.24	18.63	14.54	11.84	8.745	5.133	3.730

Constant Power Discharge (Watts/cell) at 25 °C (77°F)

F.V/Time	3MIN	5MIN	8MIN	10MIN	15MIN	20MIN	30MIN	60MIN	90MIN
1.60V	84.36	74.16	59.46	51.16	38.10	30.17	21.58	12.28	8.787
1.67V	77.51	68.13	55.11	47.84	36.00	28.79	20.78	11.82	8.488
1.70V	74.84	65.79	53.34	46.42	35.25	28.18	20.29	11.63	8.356
1.75V	70.00	61.53	50.25	44.05	33.60	27.11	19.65	11.31	8.140
1.80V	64.98	57.12	47.01	41.53	32.10	26.04	19.00	10.98	7.925
1.85V	56.46	49.63	40.62	35.68	27.90	22.82	16.91	9.993	7.278

