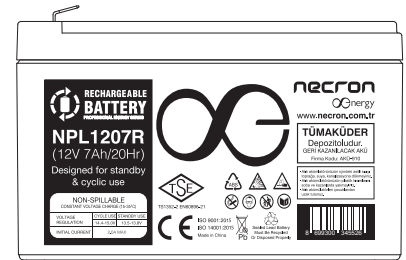
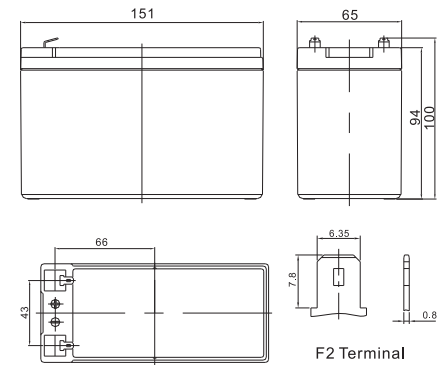


Specifications

Cells Per Unit	6
Voltage Per Unit	12V
Capacity	7Ah 20 Hour Rate to 1.67V Per Cell @25°C
Weight	Approx. 2.08Kg (Tolerance ± 5%)
Internal Resistance	≤ 22.0 mΩ (Full Charge Condition @25°C)
Terminal	Default F2
Max. Discharge Current	80A (5 Sec)
Short Circuit Current	440A
Design Life	8 Years
Max. Charging Current	2.4A
Reference Capacity	C ₁₀ 7.5Ah C ₂₀ 8.0Ah
Float Charging Voltage	13.5V ~ 13.8V @25°C Temperature Compensation: -3mV/°C/ Cell
Cycle Charging Voltage	14.1V ~ 14.4V @25°C Temperature Compensation: -4mV/°C/ Cell
Operating Temperature Range	Discharge: -20°C ~ 60°C Charge: 0°C ~ 50°C Storage: -20°C ~ 60°C
Normal Operating Temperature Range	25°C ± 5°C
Self Discharge	NECRON Valve Regulated Lead Acid (VRLA) batteries can be stored for up 6 months at 25°C and then recharging is recommended. Months Self-discharge ratio is less than 3% at 25°C. Please charge batteries before using.
Container Material	A.B.S UL94-HB, UL94-V0 Optional



Layout



Constant Current Discharge (Amperes) at 25 °C (77°F)

F.V/Time	3MIN	5MIN	8MIN	10MIN	15MIN	20MIN	30MIN	60MIN	90MIN
1.60V	41.73	36.68	29.31	25.12	18.53	14.57	10.38	5.821	4.126
1.67V	37.87	33.28	26.80	23.16	17.33	13.75	9.835	5.548	3.949
1.70V	36.23	31.85	25.73	22.32	16.80	13.38	9.592	5.427	3.876
1.75V	33.56	29.50	23.97	20.91	15.87	12.72	9.191	5.245	3.758
1.80V	30.74	27.02	22.16	19.51	15.07	12.12	8.790	5.048	3.625
1.85V	26.28	23.10	18.88	16.56	12.92	10.52	7.773	4.563	3.316

Constant Power Discharge (Watts/cell) at 25 °C (77°F)

F.V/Time	3MIN	5MIN	8MIN	10MIN	15MIN	20MIN	30MIN	60MIN	90MIN
1.60V	74.99	65.92	52.85	45.47	33.87	26.82	19.18	10.91	7.811
1.67V	68.90	60.56	48.99	42.53	32.00	25.59	18.47	10.50	7.545
1.70V	66.52	58.48	47.41	41.26	31.33	25.05	18.04	10.34	7.427
1.75V	62.22	54.69	44.67	39.16	29.87	24.10	17.47	10.05	7.236
1.80V	57.76	50.77	41.79	36.91	28.53	23.14	16.89	9.762	7.044
1.85V	50.19	44.12	36.11	31.72	24.80	20.28	15.03	8.883	6.469

